

# CELLBOX™ SHIPPER

## THE NEW GENERATION FOR LIVE CELL SHIPPERS



Cellbox™  
Shipper  
**Ground**



Made in Germany

The Cellbox™ Shipper **Ground** makes it possible to perform very long distance transport by road, rail and sea. It was designed to use disposable CO<sub>2</sub> cartridges, allowing for quick and easy refilling on-the-go. The user-programmable CO<sub>2</sub> and temperature values allow you to optimize the conditions in the incubation chamber for your precious biological material.

### Benefits of live cell transport



- ➔ No pH-shift or use of metabolically active cryoprotectants
- ➔ No altered protein expression; no mechanic or osmotic stress
- ➔ Intelligently maintains internal environment for up to 48 hours
- ➔ High cell viability and accurate continuous data logging
- ➔ No freezing, no thawing - Cells arrive ready-to-use



**CO<sub>2</sub> SUPPLY**  
Provides regulated CO<sub>2</sub> environment



**TEMPERATURE**  
Maintains temperature between 28-38°C



**APP**  
Data logging and export via Cellbox App



**RECHARGEABLE**  
Li-ION battery with external 100 - 230V power supply

## CONTACT

✉ [enquiries@cellbox-solutions.com](mailto:enquiries@cellbox-solutions.com)

🌐 [www.cellbox-solutions.com](http://www.cellbox-solutions.com)

📍 Borsteler Chaussee 85-99A 22453 Hamburg | Komödienstraße 56-58 50667 Köln Germany

# CELLBOX™ GROUND FLIGHT

CO <sub>2</sub> source	Disposable mini cartridge
CO <sub>2</sub> concentration	0 – 18 %
Temperature range	28-38°C @ 23°C ambient temperature
Maintains 5% CO <sub>2</sub> environment for	+ 72 hours
Battery maintains 37°C for	+ 48 hours <sup>*</sup>
Data logging	Reworked Cellbox App
Data logging interval	every 1 minute
21 CFR Part 11 Software	✓ <sup>**</sup>
Touchscreen input	✓
Flight permit	-
Lid opening sensor	✓
Tilt	✓
Vibration	✓
Acceleration	✓
Ambient pressure	✓
Ambient temperature	✓
GPRS tracker	✓ <sup>**</sup>
Weight (kg)	18
Power	100 – 240 V
Car adapter	✓

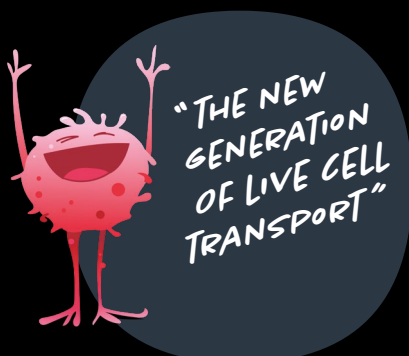
<sup>\*</sup> in Cellbox Overpack@  
23°ambient temperature  
<sup>\*\*</sup> on request



**USER FRIENDLY**  
Easy to Use GUI & App



**21 CFR PART 11 COMPLIANCE**  
Standard for Data Integrity



**SENSING**  
Six New Onboard Sensors



**AUDIT TRAIL**  
Documentary Track  
of Device Activities